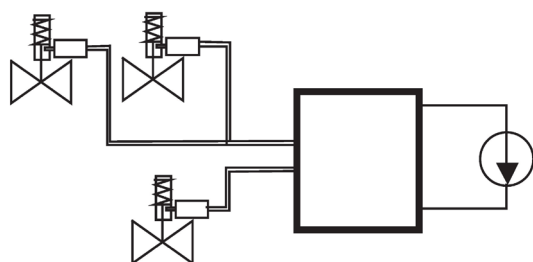


# Electric Quick-closing Valve Systems

**Blackout-safe power supply of several quick-closing valves with one control cabinet**



- ✓ Room-saving dimensions
- ✓ Easy and time-saving installation, trouble-free system start-up
- ✓ Highest operational safety due to numerous control and alarm functions (with additional external signalisation)
- ✓ Very complex plants, high number of quick-closing valves possible



- ✓ Voltage supply variable
- ✓ Variable grouping of valves
- ✓ Highly economic system costs
- ✓ Remote release, manual reset
- ✓ Uncomplicated refit possible with all ARMATUREN-WOLFF quick-closing valves

